

# Hampshire Water Transfer and Water Recycling Project

## Environmental Statement – Figure 4.7 Key design refinements implemented at Stage 5

**VOLUME NUMBER: 6**

**PLANNING INSPECTORATE SCHEME NUMBER: WA010002**

**APPLICATION DOCUMENT REFERENCE: 6.3**

**APFP REGULATION: 5(2)(a)**

May 2026

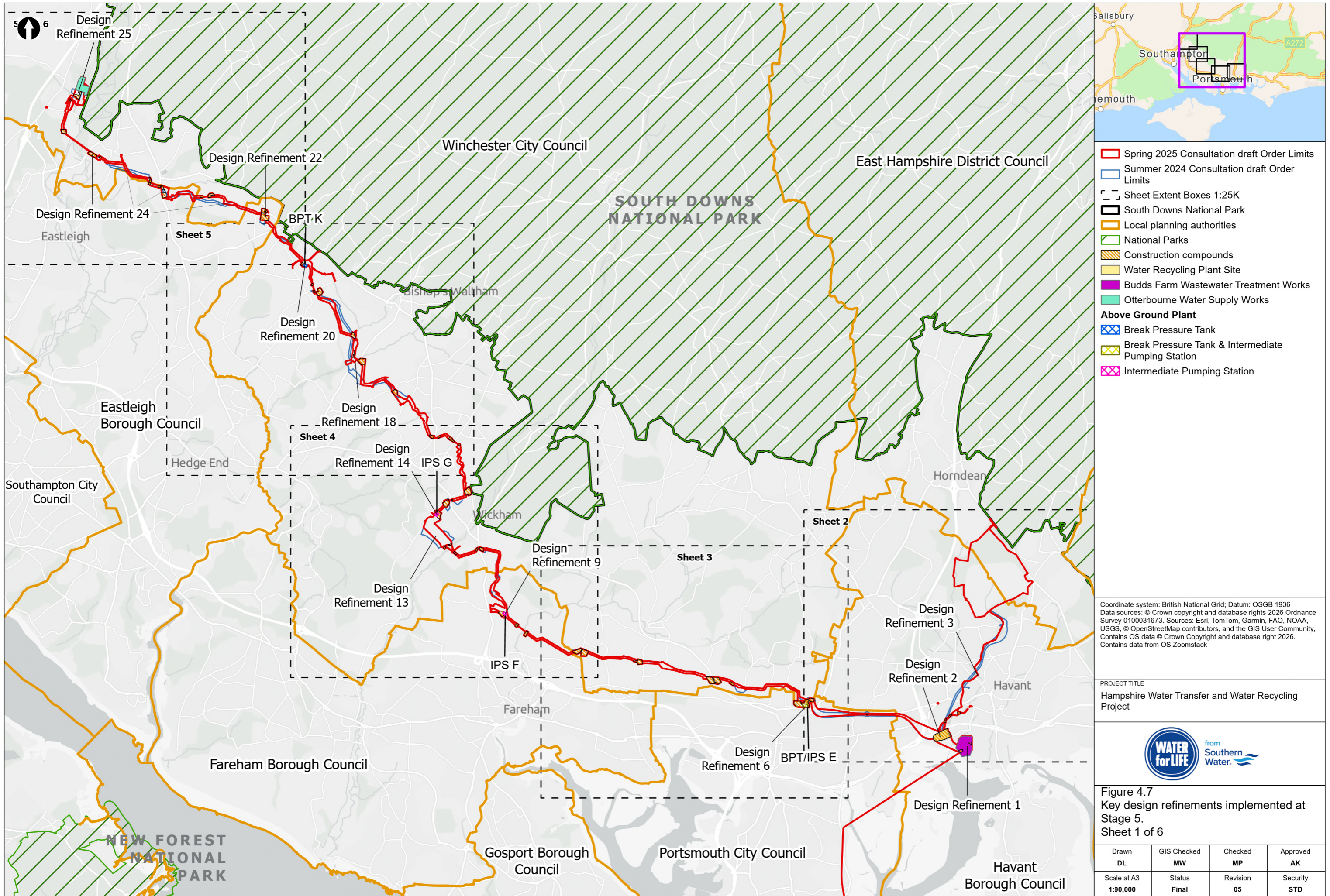
Version 0



from  
**Southern  
Water** 

The Southern Water logo consists of three stylized, wavy blue lines of varying lengths, positioned to the right of the text 'Southern Water'.





Coordinate system: British National Grid; Datum: OSGB 1936  
 Data sources: © Crown copyright and database rights 2026 Ordnance Survey 0100031673. Sources: Esri, TomTom, Garmin, FAO, NOAA, USGS, © OpenStreetMap contributors, and the GIS User Community, Contains OS data © Crown Copyright and database right 2026. Contains data from OS Zoomstack

PROJECT TITLE  
 Hampshire Water Transfer and Water Recycling Project

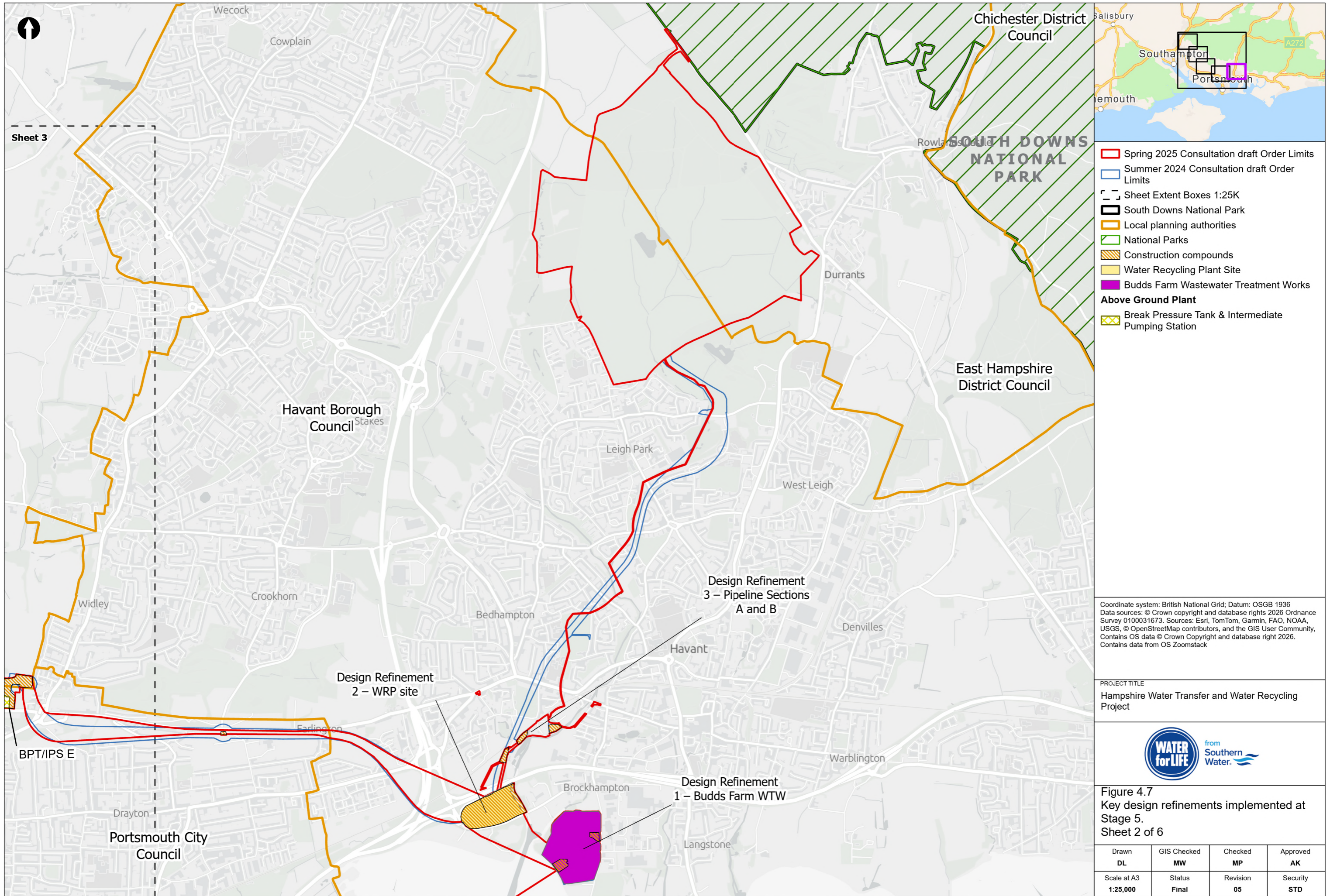


Figure 4.7  
 Key design refinements implemented at Stage 5.  
 Sheet 1 of 6

Drawn <b>DL</b>	GIS Checked <b>MW</b>	Checked <b>MP</b>	Approved <b>AK</b>
Scale at A3 <b>1:90,000</b>	Status <b>Final</b>	Revision <b>05</b>	Security <b>STD</b>

Drawing Number  
**PC5223-RHD-ES-ZZ-D-Z-0113**

© Southern Water 2026  
 This document is issued for the party which commissioned it and for specific purposes connected with the captioned project only. It should not be relied upon by any other party or used for any other purpose. We accept no responsibility for the consequences of this document being relied upon by any other party, or being used for any other purpose, or containing any error or omission which is due to an error or omission in data supplied to us by other parties.



- Spring 2025 Consultation draft Order Limits
  - Summer 2024 Consultation draft Order Limits
  - Sheet Extent Boxes 1:25K
  - South Downs National Park
  - Local planning authorities
  - National Parks
  - Construction compounds
  - Water Recycling Plant Site
  - Budds Farm Wastewater Treatment Works
- Above Ground Plant**
- Break Pressure Tank & Intermediate Pumping Station

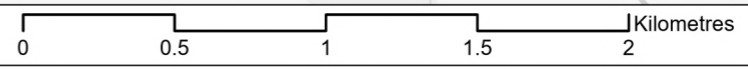
Coordinate system: British National Grid; Datum: OSGB 1936  
 Data sources: © Crown copyright and database rights 2026 Ordnance Survey 0100031673. Sources: Esri, TomTom, Garmin, FAO, NOAA, USGS, © OpenStreetMap contributors, and the GIS User Community, Contains OS data © Crown Copyright and database right 2026. Contains data from OS Zoomstack

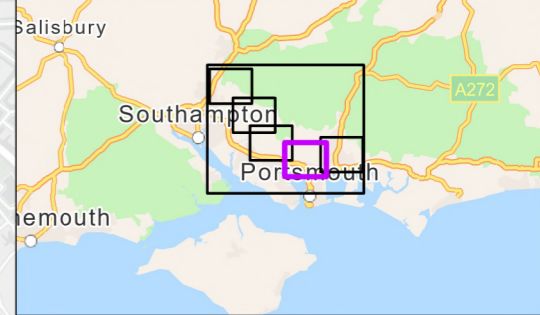
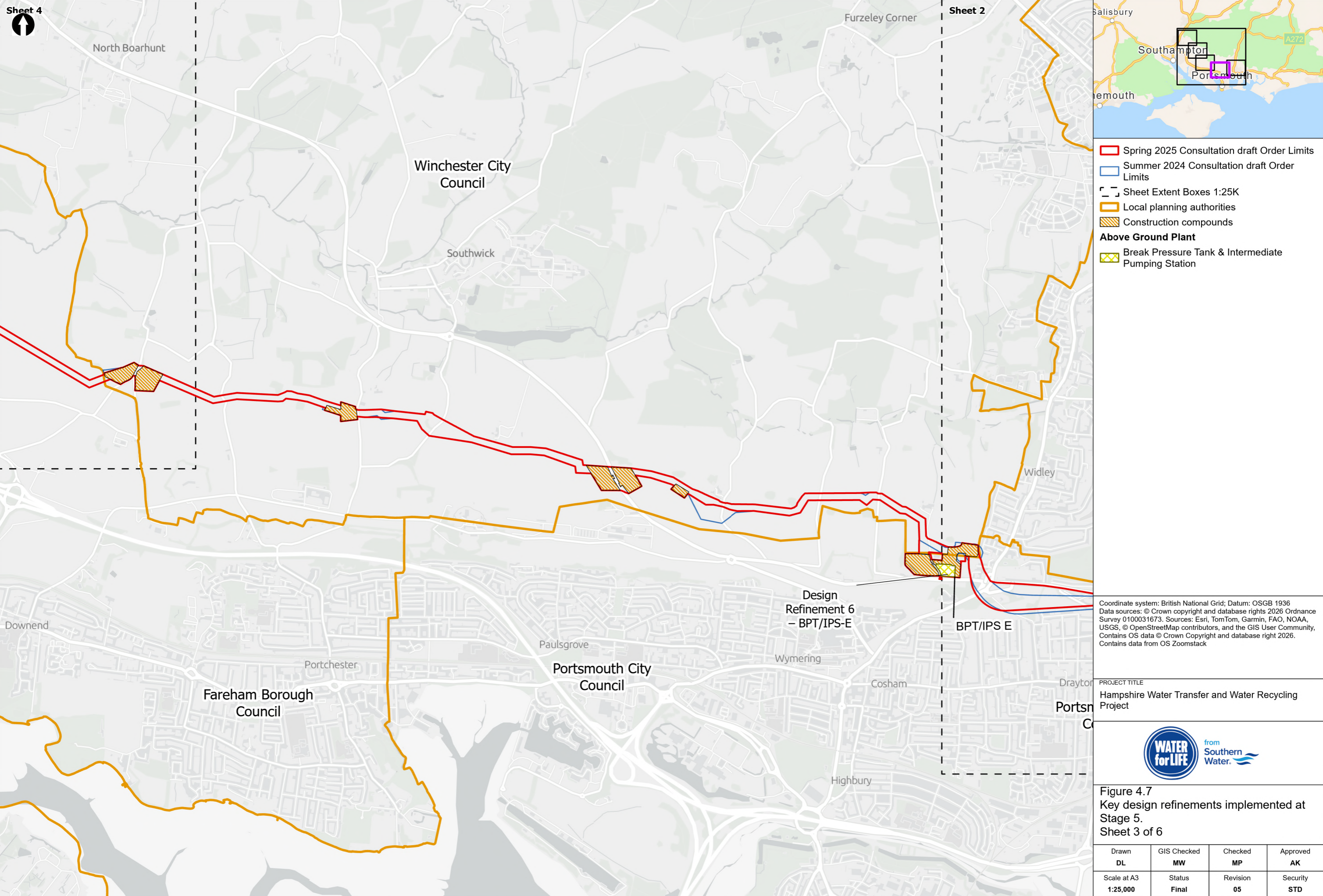
PROJECT TITLE  
 Hampshire Water Transfer and Water Recycling Project



Figure 4.7  
 Key design refinements implemented at Stage 5.  
 Sheet 2 of 6

Drawn <b>DL</b>	GIS Checked <b>MW</b>	Checked <b>MP</b>	Approved <b>AK</b>
Scale at A3 <b>1:25,000</b>	Status <b>Final</b>	Revision <b>05</b>	Security <b>STD</b>





- Spring 2025 Consultation draft Order Limits
- Summer 2024 Consultation draft Order Limits
- Sheet Extent Boxes 1:25K
- Local planning authorities
- Construction compounds
- Above Ground Plant**
- Break Pressure Tank & Intermediate Pumping Station

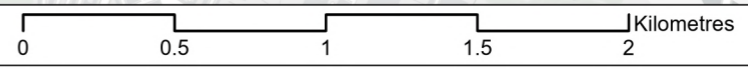
Coordinate system: British National Grid; Datum: OSGB 1936  
 Data sources: © Crown copyright and database rights 2026 Ordnance Survey 0100031673. Sources: Esri, TomTom, Garmin, FAO, NOAA, USGS, © OpenStreetMap contributors, and the GIS User Community, Contains OS data © Crown Copyright and database right 2026. Contains data from OS Zoomstack

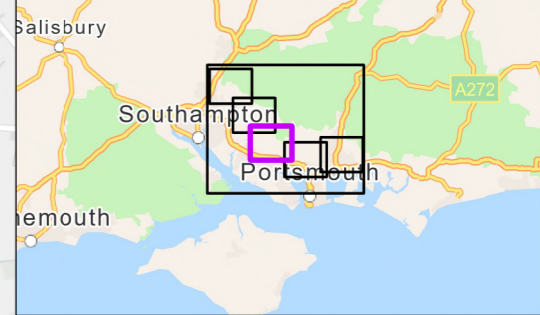
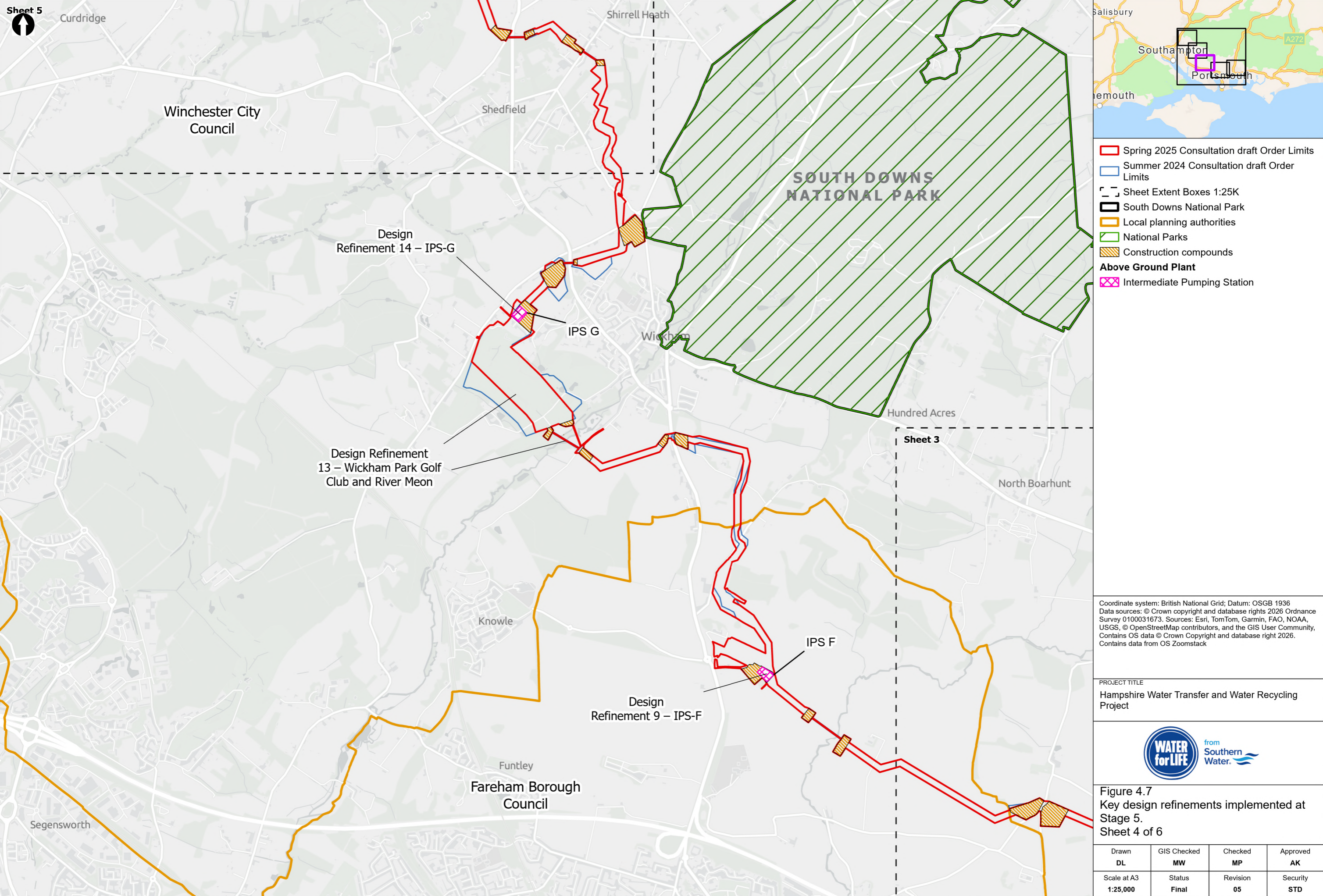
PROJECT TITLE  
 Hampshire Water Transfer and Water Recycling Project



Figure 4.7  
 Key design refinements implemented at Stage 5.  
 Sheet 3 of 6

Drawn <b>DL</b>	GIS Checked <b>MW</b>	Checked <b>MP</b>	Approved <b>AK</b>
Scale at A3 <b>1:25,000</b>	Status <b>Final</b>	Revision <b>05</b>	Security <b>STD</b>





- ▬ Spring 2025 Consultation draft Order Limits
- ▬ Summer 2024 Consultation draft Order Limits
- Sheet Extent Boxes 1:25K
- South Downs National Park
- Local planning authorities
- National Parks
- Construction compounds
- Above Ground Plant**
- X Intermediate Pumping Station

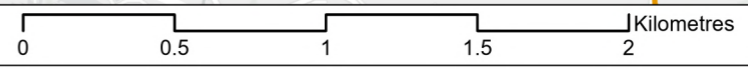
Coordinate system: British National Grid; Datum: OSGB 1936  
 Data sources: © Crown copyright and database rights 2026 Ordnance Survey 0100031673. Sources: Esri, TomTom, Garmin, FAO, NOAA, USGS, © OpenStreetMap contributors, and the GIS User Community, Contains OS data © Crown Copyright and database right 2026. Contains data from OS Zoomstack

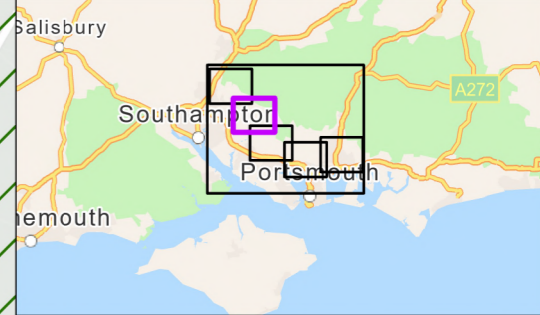
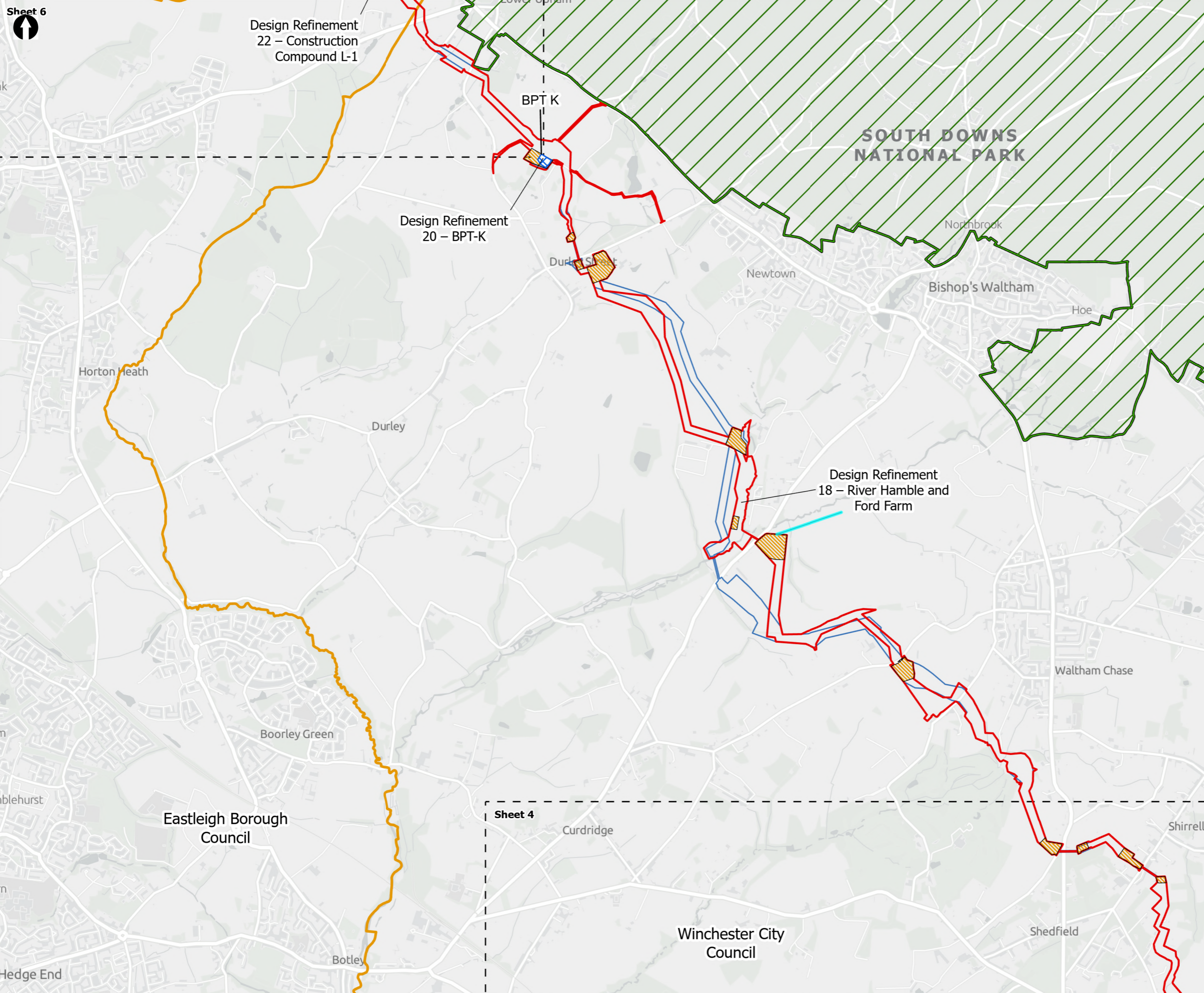
PROJECT TITLE  
 Hampshire Water Transfer and Water Recycling Project



Figure 4.7  
 Key design refinements implemented at Stage 5.  
 Sheet 4 of 6

Drawn <b>DL</b>	GIS Checked <b>MW</b>	Checked <b>MP</b>	Approved <b>AK</b>
Scale at A3 <b>1:25,000</b>	Status <b>Final</b>	Revision <b>05</b>	Security <b>STD</b>





- Spring 2025 Consultation draft Order Limits
- Summer 2024 Consultation draft Order Limits
- Sheet Extent Boxes 1:25K
- South Downs National Park
- Local planning authorities
- National Parks
- Construction compounds
- Above Ground Plant**
- Break Pressure Tank

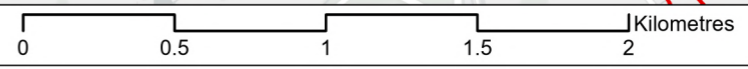
Coordinate system: British National Grid; Datum: OSGB 1936  
 Data sources: © Crown copyright and database rights 2026 Ordnance Survey 0100031673. Sources: Esri, TomTom, Garmin, FAO, NOAA, USGS, © OpenStreetMap contributors, and the GIS User Community, Contains OS data © Crown Copyright and database right 2026. Contains data from OS Zoomstack

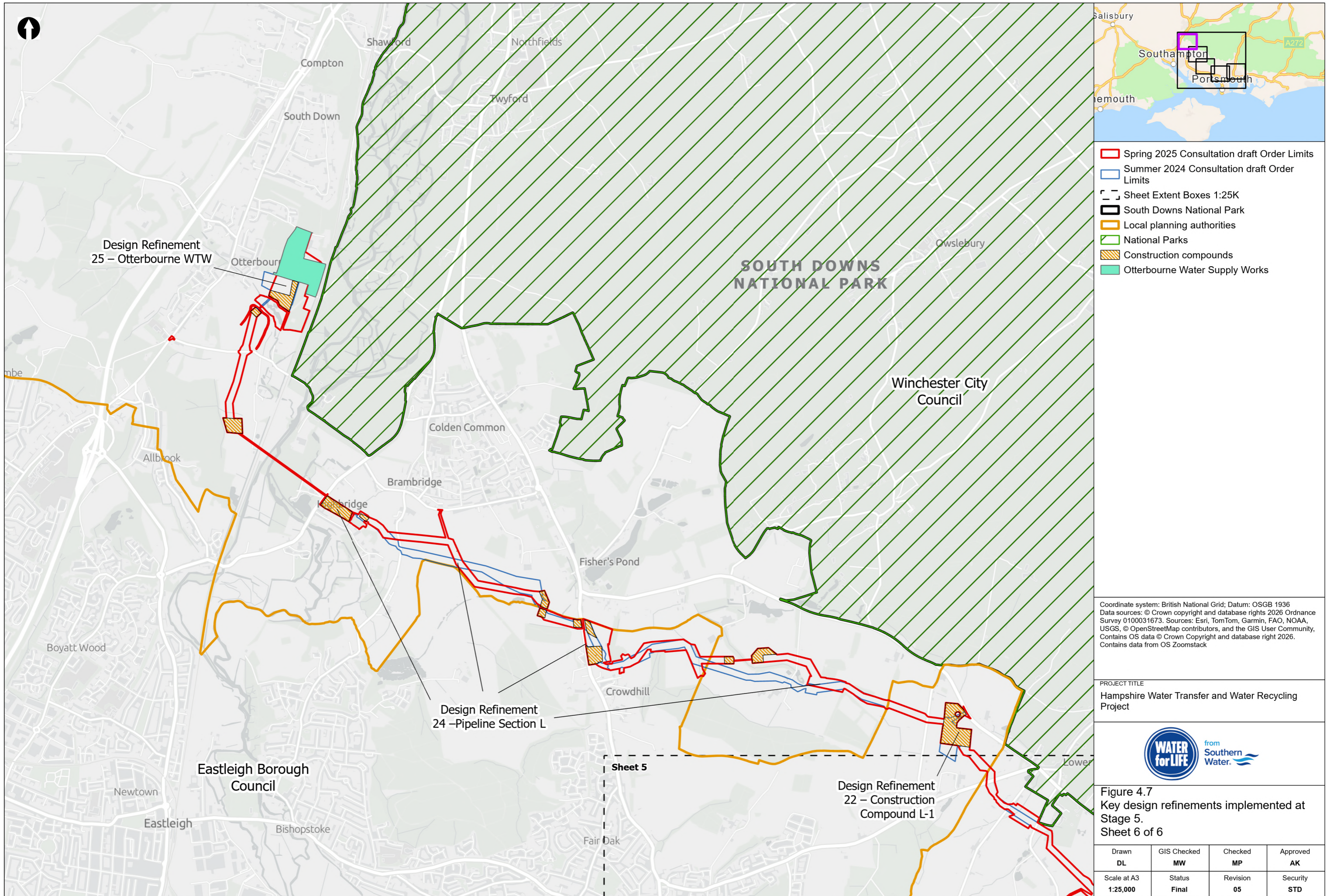
PROJECT TITLE  
 Hampshire Water Transfer and Water Recycling Project



Figure 4.7  
 Key design refinements implemented at Stage 5.  
 Sheet 5 of 6

Drawn <b>DL</b>	GIS Checked <b>MW</b>	Checked <b>MP</b>	Approved <b>AK</b>
Scale at A3 <b>1:25,000</b>	Status <b>Final</b>	Revision <b>05</b>	Security <b>STD</b>





- Spring 2025 Consultation draft Order Limits
- Summer 2024 Consultation draft Order Limits
- Sheet Extent Boxes 1:25K
- South Downs National Park
- Local planning authorities
- National Parks
- Construction compounds
- Otterbourne Water Supply Works

Coordinate system: British National Grid; Datum: OSGB 1936  
 Data sources: © Crown copyright and database rights 2026 Ordnance Survey 0100031673. Sources: Esri, TomTom, Garmin, FAO, NOAA, USGS, © OpenStreetMap contributors, and the GIS User Community, Contains OS data © Crown Copyright and database right 2026. Contains data from OS Zoomstack

PROJECT TITLE  
 Hampshire Water Transfer and Water Recycling Project



Figure 4.7  
 Key design refinements implemented at Stage 5.  
 Sheet 6 of 6

Drawn <b>DL</b>	GIS Checked <b>MW</b>	Checked <b>MP</b>	Approved <b>AK</b>
Scale at A3 <b>1:25,000</b>	Status <b>Final</b>	Revision <b>05</b>	Security <b>STD</b>